



**Supplier's City**  
*Your best logistics solution next door*

# SUPPLIER'S CITY

2024



HERMOSILLO, SONORA

Bld. Fusión 10 Esq. con Lincoln  
Parque Industrial Dynatech Sur, 83297 Hmo, Son.



**Supplier's City**  
*Your best logistics solution next door*



To meet the needs of the automotive industry, Supplier's City was founded in 2005 in Hermosillo Sonora Mexico specifically located in Dynatech Sur Parque Industrial.

Our goal is to serve customers with an integrated supply chain. Supplier's City has expanded its services to various industries.

Teamwork has been the fundamental key to achieving our goals.

Our staff is our most valuable element within the organization. Our professional team develops strategies that will help your company reach its potential in the world trade business. 19 years of experience with a professional career in various areas such as:

- Materials, Planning and Logistics
- Supply chain
- C-TPAT / OEA
- ISO9000
- Green Belt / Six Sigma
- BlackBelt
- Lean Manufacturing (LLA)
- Projects management
- Just in time
- Customs Advisor / Liaison



**Supplier's City**  
*Your best logistics solution next door*

## **MISSION**

Employees that work together, company and clients in search of a common goal; implementing innovation, improvement of strategies in processes and constant training.

## **VISION**

Compliance with quality and environmental standards.  
Efficient in its processes.  
Constant search for technological innovation.

## **GOALS**

To be an integral part of our clients' supply chain, delivering a committed, personalized and quality service proposal in each of our processes.

## **QUALITY POLICY**

Supplier's City S.A de C.V is a company committed to meeting the objectives of its customers, always seeking to exceed their service expectations.



**Supplier's City**  
Your best logistics solution next door

# SUPPLIER'S CITY S.A. DE C.V.

## WAREHOUSING AREA

HERMOSILLO						
FUSION 10	HENRY FORD A	HENRY FORD B	HENRY FORD C	HENRY FORD D	PLATA	DYNATECH CENTRO
15,000 M2	3,350 M2	3,500 M2	3,300 M2	2,230 M2	500 M2	2,450 M2

SALTILLO			GUANAJUATO	QUERETARO
RAMOS A	RAMOS B	RAMOS C	SILAO	QUERETARO
4,500 M2	4,850 M2	10,107 M2	3,100 M2	NEGOTIATION

<b>TOTAL</b>	<b>52,887 M2</b>
TOTAL HERMOSILLO	30,330 M2
TOTAL SALTILLO	19,457 M2
GUANAJUATO	3,100 M2
QUERETARO	TBD



**Supplier's City**  
Your best logistics solution next door

**CUSTOMERS:**



**SERVICES**

- Sequencing of parts
  - TI
  - Martinrea
- Warehouse
  - ODC (Excesses)
  - EFTEC
  - Steel
  - Aerospace
  - Vehicles
  - Isotanks
- Desconsolidation center
- Cross Dock
- Just in time Assortment
- Sorting area
- Rework Area
- Inbound and outbound
- Service Parts
- Local freights
- Inspection



**TOTAL**  
**15,000 M<sup>2</sup>**



**Supplier's City**  
*Your best logistics solution next door*

# SUPPLIER'S CITY S.A. DE C.V.

## HERMOSILLO TIRES

### CLIENTS:



### SERVICES:

- Warehousing
  - Tires
- Repacking
- Local freights
- Customs services



**TOTAL**  
**3,350 M<sup>2</sup>**



**Supplier's City**  
*Your best logistics solution next door*

**SUPPLIER'S CITY S.A. DE C.V.**

# HERMOSILLO WHEELS

## CLIENTS:



## SERVICES:

- Warehousing
  - Wheels
- Repacking
- Local freights
- Customs services



**TOTAL**  
**3,500 M<sup>2</sup>**



**Supplier's City**  
*Your best logistics solution next door*

**SUPPLIER'S CITY S.A. DE C.V.**

# HERMOSILLO SONORA FORMING

## CLIENTS:



## SERVICES:

- Warehousing
  - Fasteners
  - Metering
- Repacking
- Local Freights
- Customs Services
- Sorting area



**TOTAL**  
**3,300 M<sup>2</sup>**





**Supplier's City**  
*Your best logistics solution next door*

# SUPPLIER'S CITY S.A. DE C.V.

## HERMOSILLO MINING

### CLIENTS:



### SERVICES:

- Warehousing
  - Mining Supplies
- Repacking
- Local Freights
- Customs Services



**TOTAL**  
**2,230 M<sup>2</sup>**



**Supplier's City**  
*Your best logistics solution next door*

**SUPPLIER'S CITY S.A. DE C.V.**  
**HERMOSILLO PLATA**

## CLIENTS:



## SERVICES:

- Warehouse
  - Chemicals
- Local freights
- Packaging supplies
  - Pallets
  - Cardboard boxes
  - VCI bags



**TOTAL**  
**500 M<sup>2</sup>**



**Supplier's City**  
*Your best logistics solution next door*

**SUPPLIER'S CITY S.A. DE C.V.**

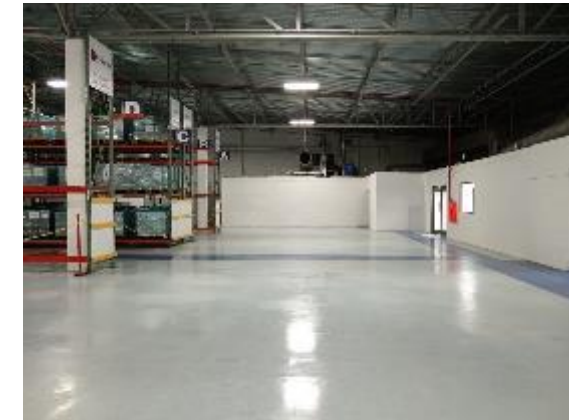
# HERMOSILLO DYNATECH CENTRO

## CLIENTS:



## SERVICES:

- Warehousing
  - Former administrative documentation
  - Mining tires
- Freights
  - Local freights
- Repacking



**TOTAL**  
**2,450 M<sup>2</sup>**



**Supplier's City**  
Your best logistics solution next door

**SUPPLIER'S CITY S.A. DE C.V.**

**RAMOS ARIZPE, COAHUILA**

**CUSTOMERS:**



**SERVICES:**

- Warehouse
  - Screws and nuts
  - Service parts
  - Aerospace
- Sorting area
- Custom services



**TOTAL**  
**4,500 M<sup>2</sup>**



**Supplier's City**  
*Your best logistics solution next door*

**SUPPLIER'S CITY S.A. DE C.V.**

**RAMOS ARIZPE, DICASTAL**

**CLIENT:**



**SERVICES:**

- Warehousing
- Wheels
- Freights



**TOTAL**  
**4,850 M<sup>2</sup>**



**Supplier's City**  
*Your best logistics solution next door*

# SUPPLIER'S CITY S.A. DE C.V.

## RAMOS ARIZPE, C

### CLIENTS:



### SERVICES:

- Warehousing
- Freights



**TOTAL**  
**10,107 M<sup>2</sup>**



**Supplier's City**  
*Your best logistics solution next door*

# SUPPLIER'S CITY S.A. DE C.V.

## SILAO, GUANAJUATO

### CUSTOMERS:



**Dicastal**



### SERVICES:

- Warehouse
  - Wheels
  - Knuckles
  - Packaging
  - Automotive parts
  - Isotanks
- Repacking
- Sorting area
- Custom services



TOTAL  
3,100 M<sup>2</sup>



**Supplier's City**  
*Your best logistics solution next door*

**SUPPLIER'S CITY S.A. DE C.V.**

**QUERETARO**

**CUSTOMERS:**

**SERVICES:**



TOTAL  
TBD





**Supplier's City**  
*Your best logistics solution next door*

# SUPPLIER'S CITY S.A. DE C.V.

## CORE BUSINESS





**Supplier's City**  
*Your best logistics solution next door*

**SUPPLIER'S CITY S.A. DE C.V.**

**WAREHOUSE**



Wheels and Tires



Bolts and nuts



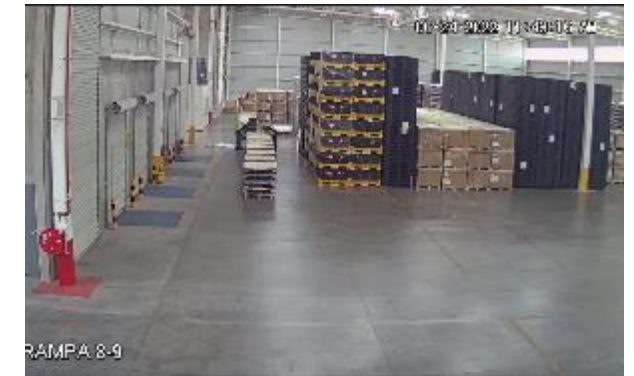
Cage



Stamping



Finished Cars



Floor

**SERVICES**

Bldv. Fusión 10 Esq. con Lincoln  
Parque Industrial Dynatech Sur, 83297 Hmo, Son.



**"Vendor Management Inventory"** is the mechanism by which a supplier abroad may maintain its own inventory stock in Mexican territory, which will be used to supply a manufacturing plant for export products and that has an IMMEX Industrial.

### **What is needed to provide the VMI service?**

Efficient electronic communication for the link-information exchange (EDI), generation of ASN's (VAN, FTP, WEB SERVICE) Highly efficient inventory control system that covers production plans and needs according to purchase orders. It also coordinates the FIFO and the integrity of the pieces. Dynamic space for the storage and control of merchandise. Controlled access for transportation, availability of platforms for loading and unloading and management of departures or shipments just in time. IMMEX of services (Certification of VAT and IEPS, Annex 24 (Inventory control), Annex 31 (Download of exports to the SAT) Management and control of Foreign Trade operations for temporary Imports and virtual Exports.

The supplier is in charge of all the shipping logistics, Supplier's City carries out the import, storage, delivery to the client and prepares virtual export with the client.



**Supplier's City**  
Your best logistics solution next door

## Benefits-Advantages offered by VMI for exporting companies:

1. Elimination of administration in maritime and land transport from origin to plant.
2. Elimination of Responsibility in the physical integrity and quality of the merchandise from origin.
3. Elimination of expenses in contracting merchandise insurance.
4. Optimization and/or elimination of spaces for storage of supplies or raw materials.
5. Improvement in internal logistics control (reduction of personnel in warehouses).
6. Reduction in physical and system material handling.
7. There is no SCRAP.
8. There is no packaging waste.
9. There are no import customs expenses, reduction of foreign trade administration personnel and supervision of Customs Agents.
10. There is no loss of material.
11. Reduction in quality rejects.
12. Stocked just in time.
13. Inventory reduction.

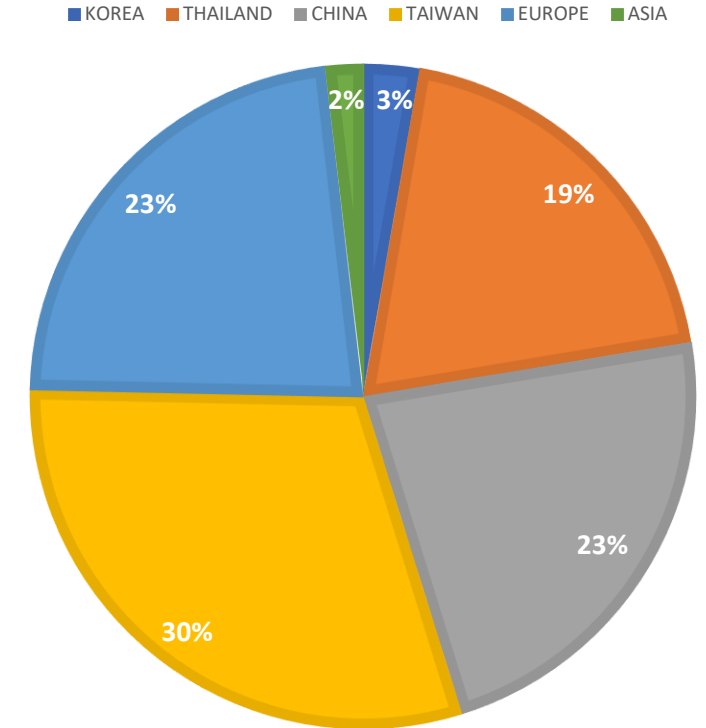




**Supplier's City**  
Your best logistics solution next door

**SUPPLIERS AND BENEFITS FOR VMI**

Name of Company	Inbound Flow	Safety Stock Level	Ports of Loading	Ports of Destination	Days of Inbound from port to destination
WIRE	GENERAL	60 DAYS	KOREA	ENSENADA	19
TIRES	GRANEL	90 DAYS	THAILAND	ENSENADA	19
WHEELS	GENERAL	45 DAYS	CHINA	ENSENADA	19
WHEELS AND KNUCKLES	GENERAL	45 DAYS	CHINA	MANZANILLO	23
WHEELS AND KNUCKLES	GENERAL	45 DAYS	CHINA	LAZARO CARDENAS	25
SCREWS AND NUTS	GENERAL	90 DAYS	TAIWAN	ENSENADA	19
SCREWS AND NUTS	GENERAL	90 DAYS	TAIWAN	MANZANILLO	23
SPARE PARTS (AUTOMOTIVE)	GENERAL	60 DAYS	EUROPE	GUAYMAS	30
SPARE PARTS (AUTOMOTIVE)	GENERAL	60 DAYS	ASIA	ENSENADA	19

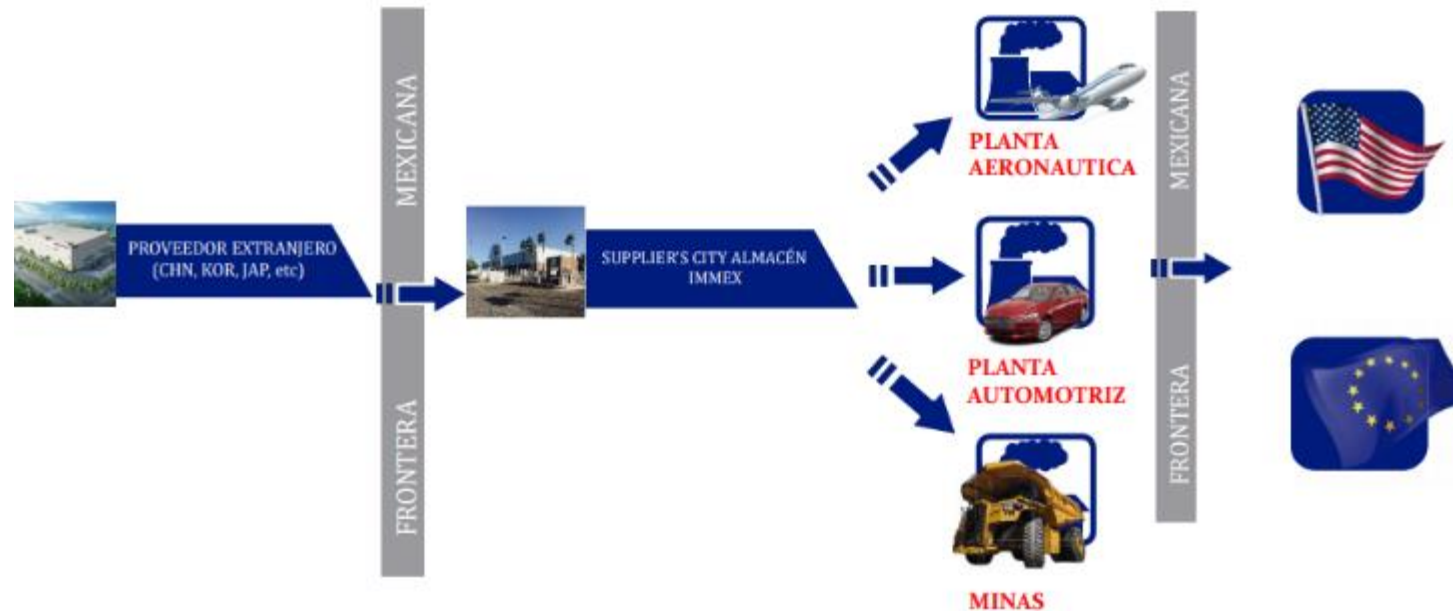


**SERVICES**



The IMMEX Program is an instrument through which it is allowed to temporarily import the necessary goods to be used in the industrial or service process for production, transformation or reparation of merchandise from foreign origin temporarily imported for export.

IMMEX of Services (Certification of VAT and IEPS, Annex 24 (Inventory Control), Annex 31 (Download of exports to the SAT). Management and control of Foreign Trade operations for temporary Imports and Virtual Exports.





**Supplier's City**  
*Your best logistics solution next door*

# SUPPLIER'S CITY S.A. DE C.V.

## CUSTOMS SERVICES



**HYUNDAI**



**1 CONTAINER**  
READY TO BE SHIPPED  
TO THE CLIENT

**BUSAN PORT**



**1 CONTAINER**  
MOVING TO  
ENSENADA'S PORT

**TRANSIT**



**2 CONTAINERS**  
TRANSPORTING  
THROUGH THE OCEAN

**ENSENADA PORT**



**1 CONTAINER**  
READY TO BE SENT  
TO SUPPLIER'S CITY

**SUPPLIER'S CITY**



**4 CONTAINERS**  
AS MINIMUM  
AT SUPPLIER'S CITY

**MARTIN REA**



**THE FLOW OF INVENTORY STARTS WHEN MARTINREA ORDERS A NEW CONTAINER TO BE SHIPPED TO SUPPLY INVENTORY**

**We are experts in working together with the Supplier and manage everything from material transportation, transportation management to warehouse in Mexico, and storage in Supplier's City.**

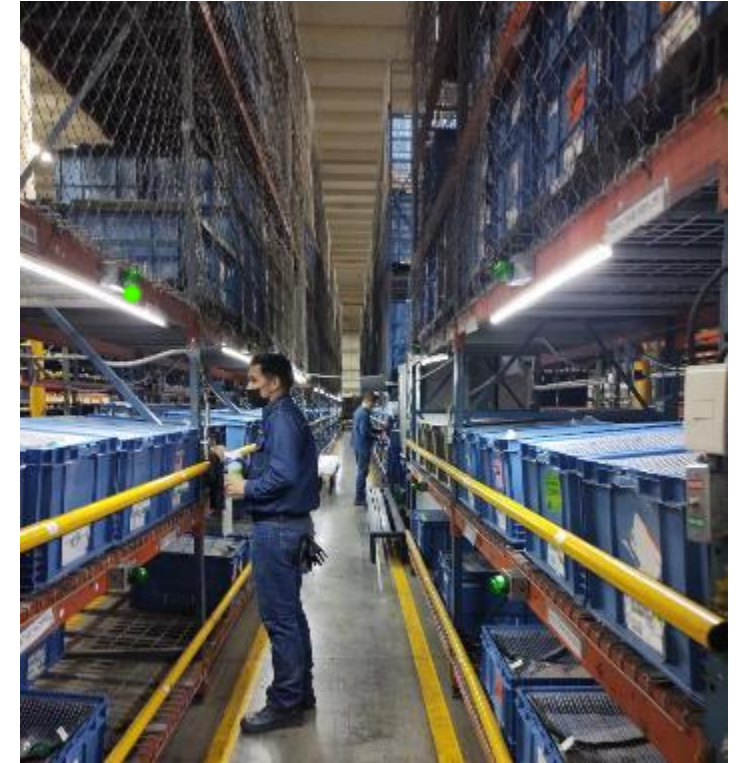
**SERVICES**



**Supplier's City**  
*Your best logistics solution next door*

**SUPPLIER'S CITY S.A. DE C.V.**

**SEQUENCING**



**SERVICES**

Blvd. Fusión 10 Esq. con Lincoln  
Parque Industrial Dynatech Sur, 83297 Hmo, Son.





**Supplier's City**  
*Your best logistics solution next door*

**SUPPLIER'S CITY S.A. DE C.V.**

**METERING**



**SERVICES**

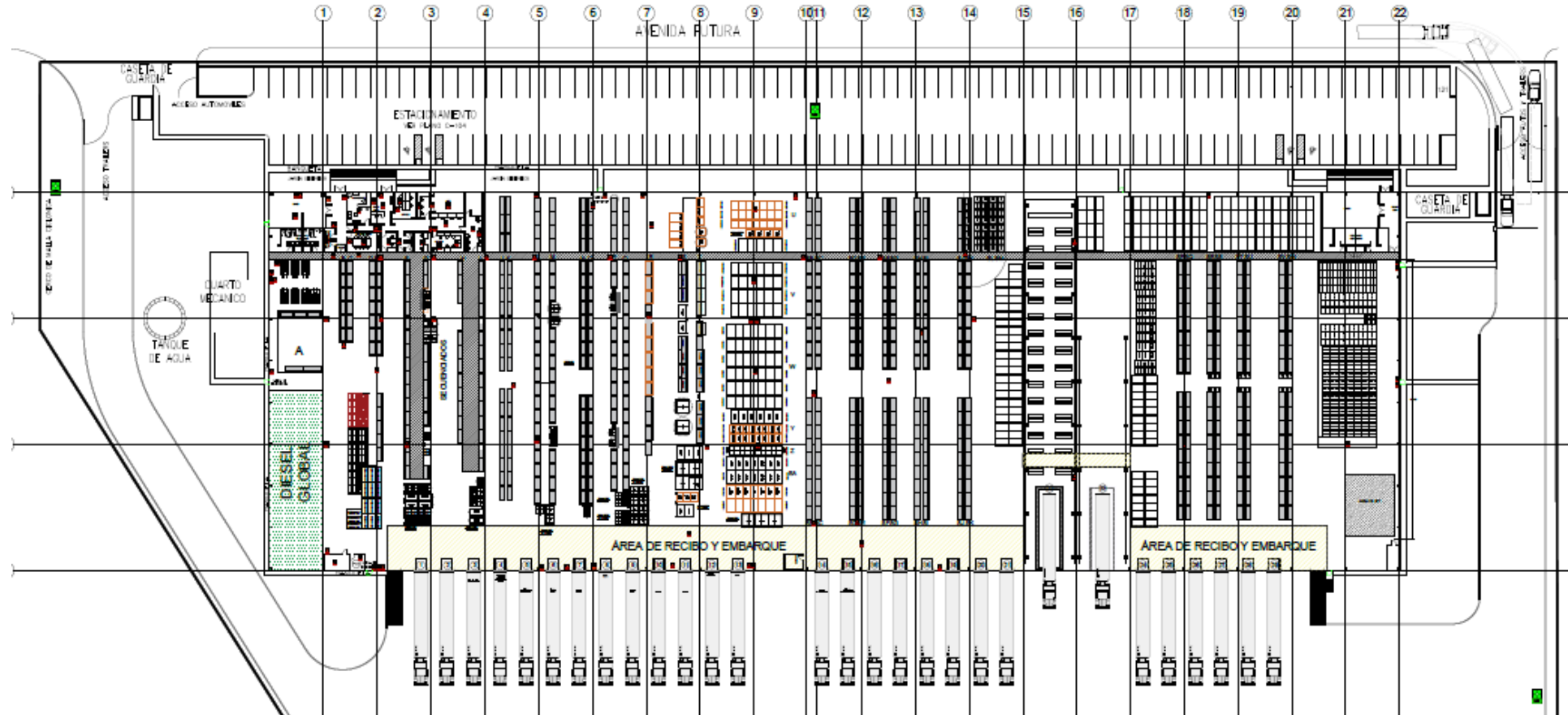
Blvd. Fusión 10 Esq. con Lincoln  
Parque Industrial Dynatech Sur, 83297 Hmo, Son.



**Supplier's City**  
Your best logistics solution next door

# SUPPLIER'S CITY S.A. DE C.V.

## STORAGE DESIGN



**SERVICES**

Bldv. Fusión 10 Esq. con Lincoln  
Parque Industrial Dynatech Sur, 83297 Hmo, Son.



**Supplier's City**  
*Your best logistics solution next door*

**SUPPLIER'S CITY S.A. DE C.V.**

**STORAGE DESIGN**



**SERVICES**

Blvd. Fusión 10 Esq. con Lincoln  
Parque Industrial Dynatech Sur, 83297 Hmo, Son.



**Supplier's City**  
*Your best logistics solution next door*

# SUPPLIER'S CITY S.A. DE C.V.

## PACKAGING SUPPLIES



**SERVICES**

Blvd. Fusión 10 Esq. con Lincoln  
Parque Industrial Dynatech Sur, 83297 Hmo, Son.



**Supplier's City**  
*Your best logistics solution next door*

**SUPPLIER'S CITY S.A. DE C.V.**

**KITTING**



**SERVICES**

Bld. Fusión 10 Esq. con Lincoln  
Parque Industrial Dynatech Sur, 83297 Hmo, Son.



**Supplier's City**  
*Your best logistics solution next door*

**SUPPLIER'S CITY S.A. DE C.V.**

**STEEL**



**SERVICES**

Blvd. Fusión 10 Esq. con Lincoln  
Parque Industrial Dynatech Sur, 83297 Hmo, Son.



**Supplier's City**  
*Your best logistics solution next door*

**SUPPLIER'S CITY S.A. DE C.V.**

**SERVICE PARTS**



**SERVICES**

Blvd. Fusión 10 Esq. con Lincoln  
Parque Industrial Dynatech Sur, 83297 Hmo, Son.



**Supplier's City**  
*Your best logistics solution next door*

**SUPPLIER'S CITY S.A. DE C.V.**

**CROSS DOCK**



**SERVICES**

Blvd. Fusión 10 Esq. con Lincoln  
Parque Industrial Dynatech Sur, 83297 Hmo, Son.





**Supplier's City**  
*Your best logistics solution next door*

**SUPPLIER'S CITY S.A. DE C.V.**

# LOCAL FREIGHTS



FUSION



FUSION



FUSION



FUSION



FUSION



FUSION



FUSION



FUSION



FUSION



FUSION



FUSION



FUSION



FUSION



FUSION



RAMOS ARIZPE



RAMOS ARIZPE



RAMOS ARIZPE



SILAO

## SERVICES

Bldv. Fusión 10 Esq. con Lincoln  
Parque Industrial Dynatech Sur, 83297 Hmo, Son.



**Supplier's City**  
*Your best logistics solution next door*

**SUPPLIER'S CITY S.A. DE C.V.**

**INSPECTION**



**SERVICES**

Blvd. Fusión 10 Esq. con Lincoln  
Parque Industrial Dynatech Sur, 83297 Hmo, Son.



**Supplier's City**  
*Your best logistics solution next door*

**SUPPLIER'S CITY S.A. DE C.V.**

**INSPECTION**



**SERVICES**

Blvd. Fusión 10 Esq. con Lincoln  
Parque Industrial Dynatech Sur, 83297 Hmo, Son.



**Supplier's City**  
Your best logistics solution next door

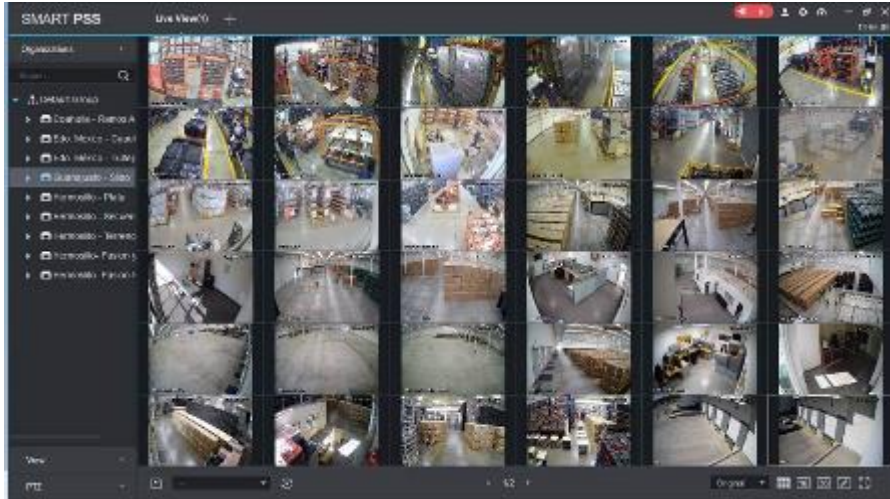
# SUPPLIER'S CITY S.A. DE C.V.

## SUPPLIER DELIVERY

### SERVICES



**Supplier's City**  
Your best logistics solution next door



We have cameras in all our warehouses to monitor processes.  
Restricted access for employees and transporters.  
**Seguridad 24/7**



Security, through identification card.  
Fire control system  
Firewall and DMZ to protect data flow  
Inventory control system (FlexNet DELMIA QUICK)  
VoIP network  
Dedicated bandwidth 100 Mbps Internet 24/7



We have software in which all Supplier's City units are registered.  
The purpose is to be able to notify our customers in real time of location and delivery times.



**Supplier's City**  
Your best logistics solution next door



**IMMEX  
CERTIFICATION**  
SINCE 2005



**IVA – IEPS  
CERTIFICATION**  
SINCE 2015



**COMPREHENSIVE  
ENVIRONMENTAL  
LICENCE**  
2017-2027



**CERTIFICATION CIVIL  
PROTECTION**  
CURRENT 2024



**SOCIALLY  
RESPONSIBLE  
COMPANY**  
2022-2024



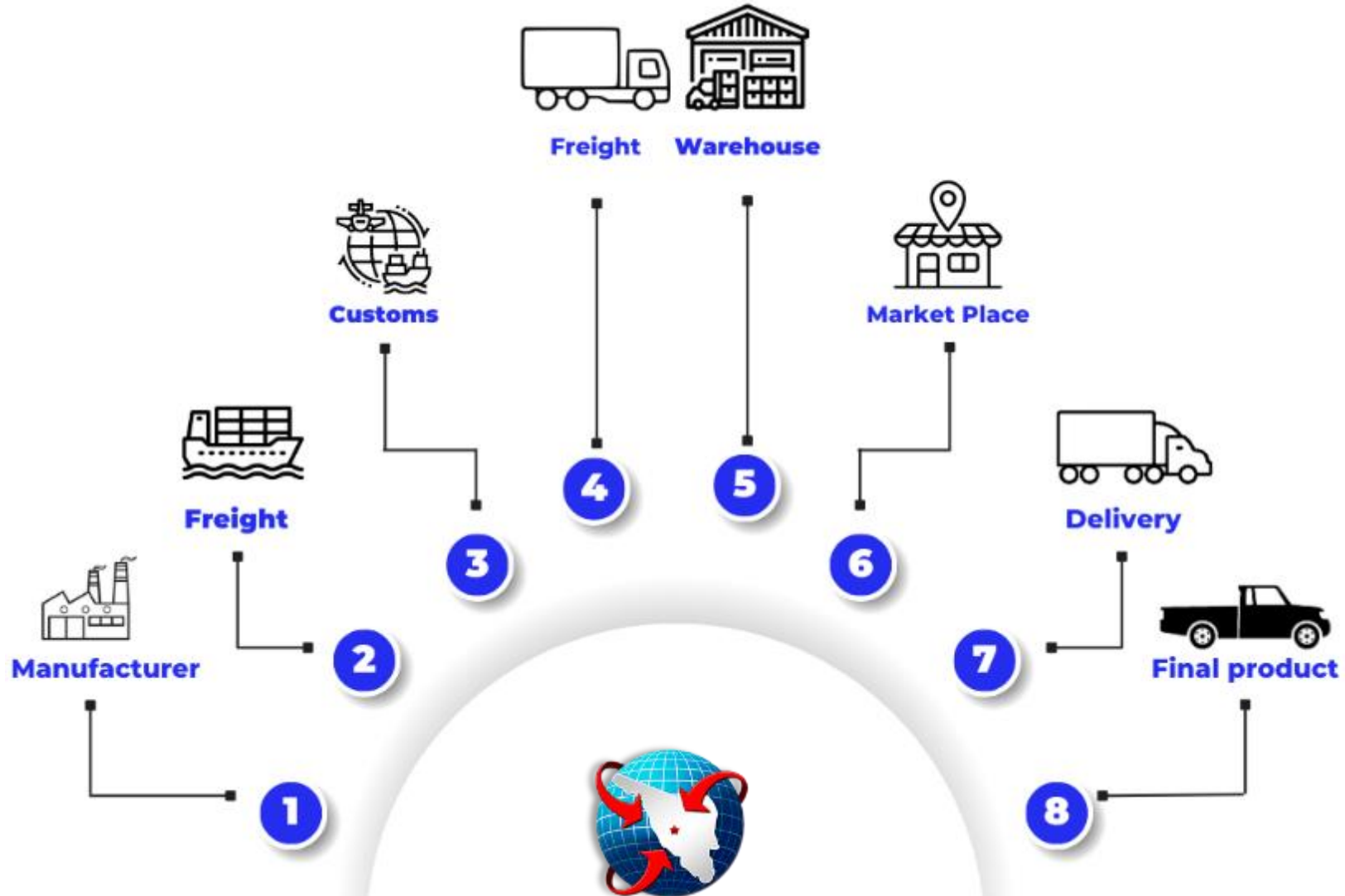
**OEA CERTIFICATION**  
ON PROCESS



**Supplier's City**  
*Your best logistics solution next door*

**SUPPLIER'S CITY S.A. DE C.V.**

**3 PL'S FLOW**





**Supplier's City**  
*Your best logistics solution next door*

# THANK YOU

Bld. Fusión 10 Esq. con Lincoln  
Parque Industrial Dynatech Sur, 83297 Hmo, Son.